

# Conext Automatic Generator Start

Automatically start and stop a generator to meet power needs.



## Product at a glance

The Conext™ Automatic Generator Start (AGS) automatically activates or stops a generator in response to changing power requirements. An excellent addition to an off-grid or backup power system, the AGS seamlessly connects to the Xanbus™ network and shares status information with all other devices on the network. It monitors a set of system user-programmable parameters, such as battery voltage, state of charge, or grid power, and activates the generator in response to any changes. The AGS can also be configured remotely using the Conext System Control Panel (SCP) or Conext ComBox to engage a generator and can assist an inverter/charger when output power demands are high.

## Product applications



Backup power



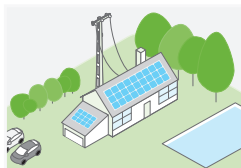
Residential grid-tie solar with backup power



Off-grid solar



Community electrification



Self-consumption

## Why choose Automatic Generator Start?

### Higher return on investment

- Integrate with an inverter/charger to maximize system power performance

### Designed for reliability

- Tested and qualified for harsh environmental conditions (HALT reliability testing)

### Flexible

- Works with multiple Xanbus devices: Conext XW+, SW, MPPT 60-150, MPPT 80-600, SCP, Conext ComBox
- User-programmable trigger settings to meet specific application needs:
  - Battery voltage
  - SOC
  - Exercise time
  - Quiet time
  - Inverter/charger AC power loads
- Supports manual start and stop operation modes

### Easy to service

- Access and troubleshoot AGS device events using the Conext ComBox or SCP
- Easily upgrade new firmware to the AGS using the Conext ComBox

### Easy to install

- Wall mount
- RJ45 connections for Xanbus network cables

### True bankability

- Warranty from a trusted partner with 180 years of experience
- World leader in industrial power drives, UPS and electrical distribution
- Strong service infrastructure worldwide to support your global needs

| Device short name                                   | Conext Automatic Generator Start  |
|---|---|
| <b>Electrical specifications</b>                    |   |
| Nominal input network voltage                       | 15 Vdc  |
| Max. operating current                              | 200 mA @ nominal input network voltage  |
| Relay contact voltage rating                        | 12 Vdc, 30 Vdc max <sup>1</sup>   |
| Max. relay contact current                          | 5 A DC <sup>1</sup>   |
| Nominal 12/24 V thermostat input voltage            | 12 Vdc/24 Vdc <sup>1</sup> = On   |
| Min. 12/24 V thermostat input voltage               | 9.5 Vdc <sup>1</sup>  |
| Max. 12/24 V thermostat input voltage               | 30 Vdc <sup>1</sup>   |
| Typical 12/24 V thermostat input current            | 14.6 mA @ 12 V  |
| Nominal 12/24 V generator running B+ voltage        | 12 Vdc/24 Vdc <sup>1</sup> = On   |
| Min. 12/24 V generator running B+ voltage           | 9.5 Vdc <sup>1</sup>  |
| Max. 12/24 V generator running B+ voltage           | 30 Vdc <sup>1</sup>   |
| Typical 12/24 V generator running B+ voltage        | 14.6 mA @ 12 V  |
| <b>General specifications</b>                       |   |
| Dimensions (H x W x D)                              | 9.55 x 14.6 x 3.7 cm (3.8 x 5.7 x 1.5 in)   |
| Weight  | 225.0 g (0.5 lb)  |
| Mounting options                                    | Wall-mount  |
| IP rating/location                                  | IP20, indoor only   |
| Warranty  | 2 to 5 years (depending on country)   |
| Part number   | 865-1060-01   |
| <b>Communication</b>                                |   |
| Network protocol                                    | Xanbus  |
| Connectors  | 2 x RJ45 ports  |
| <b>Regulatory approvals</b>                         |   |
| Safety  | CSA 107.1-01, UL 458 4th edition including the Marine supplement                                |
| EMC   | FCC part 15B Class B, Industry Canada ICES-0003 Class B, C-Tick                                 |
| <b>Included parts</b>                               |   |
|   | One network terminator  |
|   | One CAT5 cable (2.1 m)  |
|   | One mounting plate  |
|   | Four #6 screws  |
| <b>Compatible products</b>                          |   |
| Conext XW+ (230 V)                                  | XW+ 7048 E product no. 865-7048-61/XW+ 8548 E product no. 865-8548-61                           |
| Conext XW+ (120/240 V)                              | XW+ 5548 NA product no. 865-5548-01/XW+ 6848 NA product no. 865-6848-01                         |
| Conext SW (230 V)                                   | SW 2524 product no. 865-2524-61/SW 4024 product no. 865-4024-61/SW 4048 product no. 865-4048-61 |
| Conext SW (120 V)                                   | SW 2524 product no. 865-2524/SW 4024 product no. 865-4024/SW 4048 product no. 865-4048          |
| Conext MPPT 80 600                                  | Product no. 865-1032  |
| Conext MPPT 60 150                                  | Product no. 865-1030-01   |
| Conext System Control Panel                         | Product no. 865-1050-01   |
| Conext ComBox                                       | Product no. 865-1058  |
| Conext Battery Monitor                              | Product no. 865-1080-01   |
| Conext Portable Installation and Configuration Tool | Product no. 865-1155-01   |

<sup>1</sup> Limited to Class 2 levels (100 VA)

Specifications are subject to change without notice.