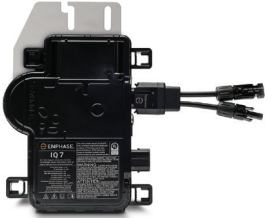


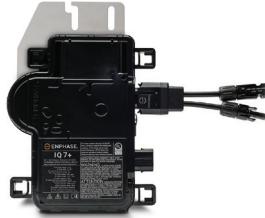
# Enphase IQ System Component List

## Enphase Microinverters and Monitoring



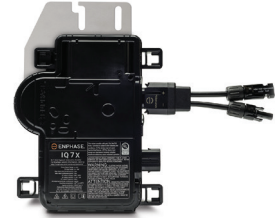
**IQ7-60-2-US**

Enphase **IQ 7 Micro™**, 250 VA peak power, MC4 DC connectors, female AC connector. Compatible with 60-cell PV modules.



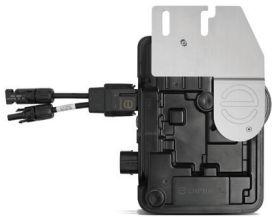
**IQ7PLUS-72-2-US**

Enphase **IQ 7+ Micro™** 295 VA peak power, MC4 DC connectors, female AC connector. Compatible with 60- and 72-cell PV modules.



**IQ7X-96-2-US**

Enphase **IQ 7X Micro™**, 320 VA peak power, MC4 DC connectors, female AC connector. Compatible with 96-cell PV modules.



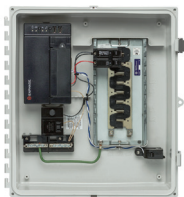
**IQ6-60-2-US / IQ6PLUS-72-2-US**

Enphase **IQ 6 Micro™**, compatible with 60-cell PV modules, 240 VA peak power,  
Enphase **IQ 6+ Micro™**, compatible with 60- and 72-cell PV modules, 290 VA peak power  
MC4 DC connectors, female AC connector.



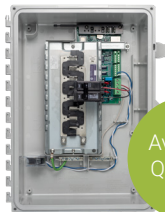
**ENV-IQ-AM1-240 M**

Enphase **IQ Envoy™**, single-phase, metered. Revenue-grade accuracy (ANSI C12.20 +/- 0.5%) with calibrated solid-core CT. Compatible with IQ Micros only.



**X-IQ-AM1-240-2 M**

Enphase **IQ Combiner+™** with IQ Envoy, 80A, single-phase, revenue-grade production metering. Compatible with Enphase IQ Micros and IQ Battery. Optional consumption monitoring.



**X-IQ-AM1-240-3 M**

Enphase **IQ Combiner 3™** with IQ Envoy PCB, 80A, single-phase, revenue-grade production metering. Optional consumption monitoring. Single-stud mounting.

Available Q4 2018

### Accessories for IQ Combiner 3

- **BRK-10A-2-240**: Circuit breaker, 2 pole, 10A, Eaton BR210
- **BRK-15A-2-240**: Circuit breaker, 2 pole, 15A, Eaton BR215
- **BRK-20A-2P-240**: Circuit breaker, 2 pole, 20A, Eaton BR220
- **XA-PLUG-120-3**: Accessory receptacle for Power Line Carrier (EPLC-01)
- **XA-ENV-PCBA-3**: IQ Envoy PCB. For replacement only.



**ENV-IQ-AM3-3P**

Enphase **IQ Commercial Envoy™**, three-phase, metered. Revenue-grade accuracy (ANSI C12.20 +/- 0.5%) with split-core CT. Compatible with IQ Micros only.



**CT-200-SPLIT**

Enphase **Consumption CT**, split-core current transformer, accuracy +/- 2.5% for monitoring whole-home energy consumption. Compatible with IQ Envoy and IQ Combiner.



**CELLMODEM-01 / -03**

Enphase **Mobile Connect™** and **Mobile Connect+™** cellular modem with 5- and 12-year data plans (US, Canada, Puerto Rico, Mexico, US Virgin Islands). For systems with up to 60 micros.



**EPLC-01**

Enphase **Power Line Carrier** Quantity 2.



**Q-BA-3-1P-60**

Enphase **Q Aggregator**, combines up to three microinverter branches, 60A max, includes one Q-BA-CAP. Compatible with Q Cable.

## Enphase AC Battery and Accessories



### IQ6PLUS-B1200-LL-I-US00-RV1

Enphase **IQ Battery™** with integrated IQ6+ Micro, 280W/1.2 kWh, 240 VAC split-phase, indoor-residential, line-to-line communications. Compatible with grid-tied PV systems using the Enphase IQ Envoy.



### BWM-16IN-B

Enphase **Battery Wall Mount Bracket™**  
Size: 487 mm (W) x 356 mm (H) / 19.2 in. (W) x 14.0 in. (H), accommodates 16 in. battery-to-battery spacing. Compatible with Enphase IQ Battery.

## Enphase Cables and Accessories



### Q-12-10-240

Enphase **Q Cable™** for 60/72 cell 1.0m portrait module pitch. Connector pitch is 1.3m. 240 male connectors plus two (2) bonus link connectors.



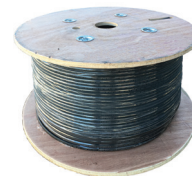
### Q-12-17-240

**Q Cable™** for 60 cell 1.7m landscape module pitch. Connector pitch is 2.0m. 240 male connectors plus two (2) bonus link connectors.



### Q-12-20-200

**Q Cable™** for 72 cell 2.0m landscape module pitch. Connector pitch is 2.3m. 200 male connectors plus two (2) bonus link connectors.



### Q-12-RAW-300

**RAW Q Cable™** is one (1) spool at 300m / 984 ft. length. 12 AWG, no connectors included.



### Q-TERM-10

Enphase **Q Cable Terminator Cap** for Q Cable ends. Center feed requires two (2) per branch. Pack of 10.



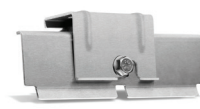
### Q-SEAL-10

Enphase **Q Sealing Caps**, female sealing cap for unused Q Cable connectors. Pack of 10.



### Q-BA-CAP-10

Enphase **Branch Aggregator Cap**, male sealing cap for unused Q Aggregator connections.



### EFM-35MM / EFM-40M

Enphase **Frame Mount** for mounting Enphase Microinverters to 35 mm or 40 mm module frames.



### Q-CLIP-100

Enphase **Q Cable Rail Mount Cable Management Clip**. Pack of 100.



### Q-DISC-10

Enphase **Q Cable Disconnect** tool for Q Cable connectors, MC and Amphenol DC connectors, and AC module mount. Pack of 10.



### Q-DCC-2

Enphase **IQ Replacement Adaptor** for MC4 DC connector.



### Q-DCC-5

Enphase **IQ Replacement Adaptor** for UTX DC (Amphenol) connector.



### Q-CONN-10M

Enphase **Male Field-Wireable Connector** to make connections from any Q Aggregator open connector. Requires MC4 crimp tool PV-CZM-18100, -19100, or -22100 for connections to Q Cable or RAW Q Cable.



### Q-CONN-10F

Enphase **Female Field-Wireable Connector** to make connections from any Q Cable open connector. Requires MC4 crimp tool PV-CZM-18100, -19100, or -22100 for connections to Q Cable or RAW Q Cable.

For more information visit [www.enphase.com](http://www.enphase.com) or call (877) 797-4743

