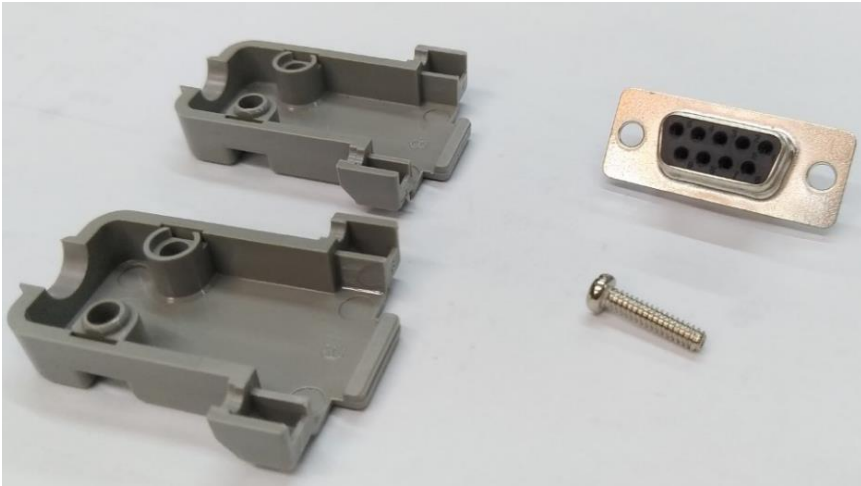


RS-232 Port Operating

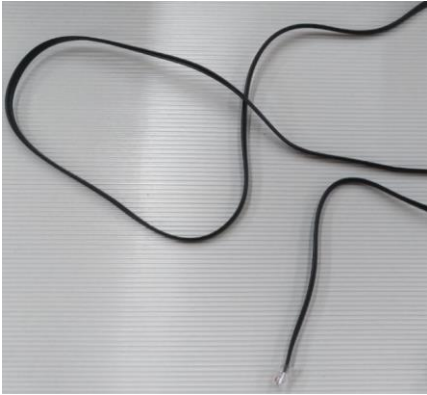
The following steps show the connection among inverter and computer.



Find a RS-232 connector



Dismantle the connector



Find a RJ-11 (6P/6C) cable

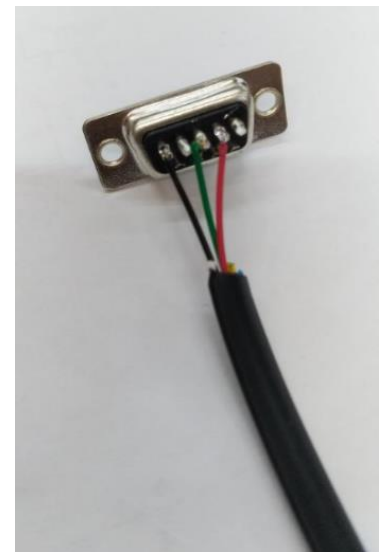


Rear side of RS-232 head



Soldering the RJ-11 cable line

to rear side of RS-232 head. You



5-1. RS-232 Port

RS-232 Port : Serial port monitoring and control through computer interface.

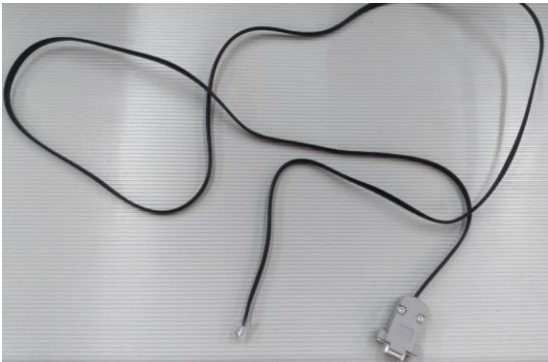


Figure 19. RS-232 cable

SP Series		Computer	
PIN Number	Description	PIN Number	Description
1	Not used	Not used	1
2	GND	RXD	2
3	RXD	TXD	3
4	TXD	Not used	4
5	Remo Control	GND	5
6	VCC	Not used	6
		Not used	7
		Not used	8
		Not used	9

Table 33. RS-232 interface definition

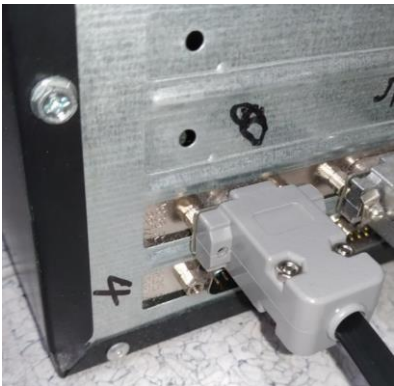
Follow Pin-to-Pin connection.



RJ-11-to-RS232 Connection cable completed

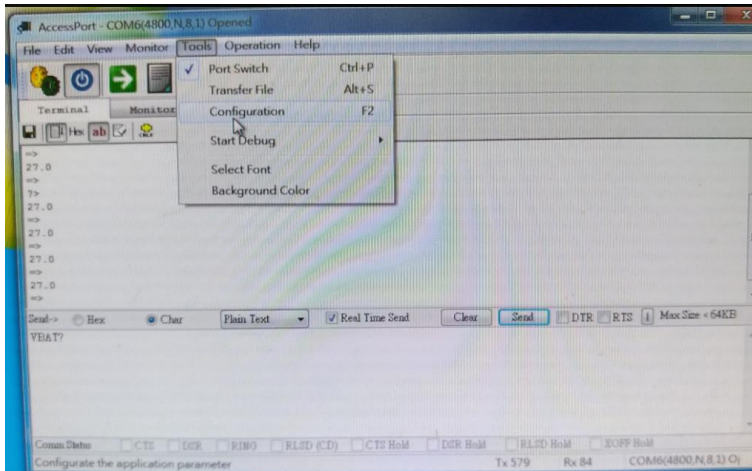


RJ-11 connect to the inverter

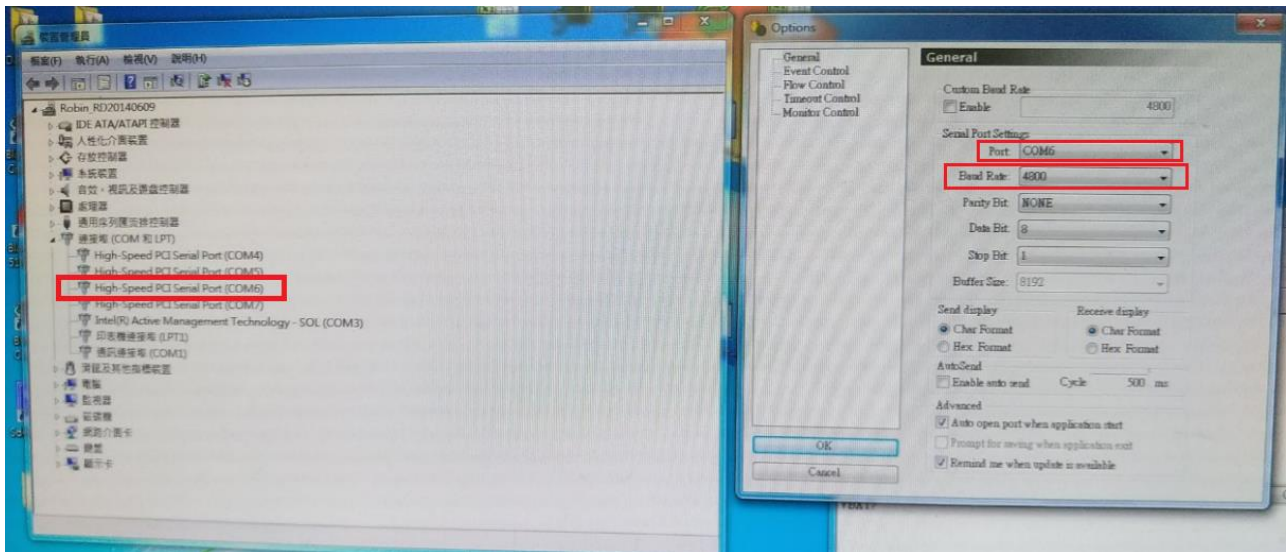


RSR-232 connect to PC

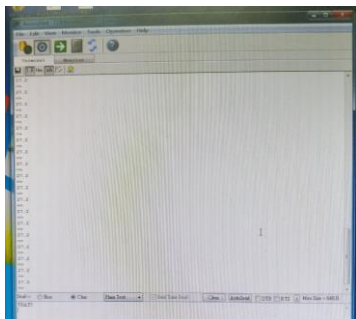
For the software, please use the public software such as AccessPort
Here I the free software of "AccessPort" for the example.



Turn on the software of AccessPort and choose “Tools” → “Configuration”



Connect to the COM Port and adjust Baud Rate at 4800



You can start to use the commands