

Series 100 UL Corrugated Block

Required Tools:

Hammer or Stud Finder
 Drill with 1/8 inch Pilot Drill Bit
 Roof Sealant
 Torque Driver with Bit Adapter
 1/2 inch Socket Wrench

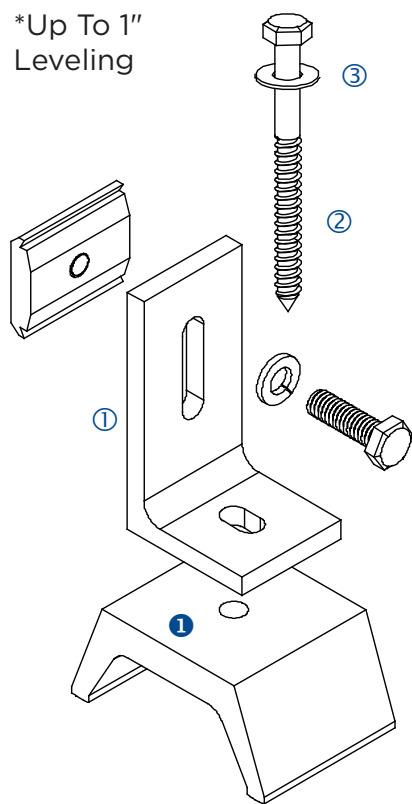
Materials included in Series 100 Straddle Block:

- ① (1) SnapNrack Corrugated Straddle Block

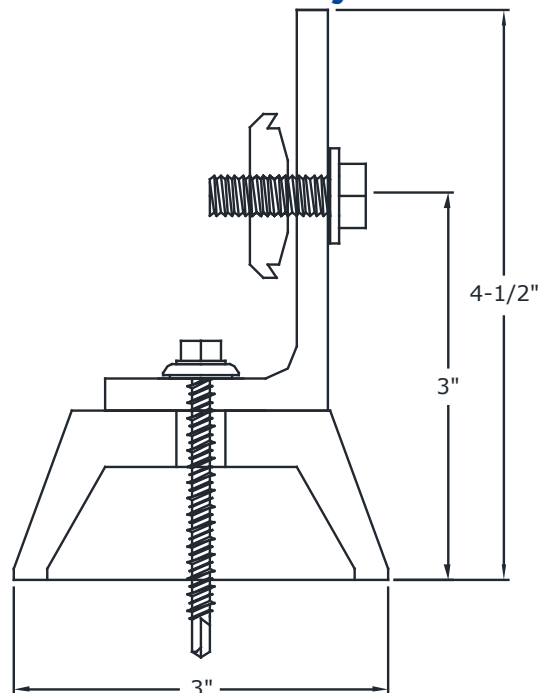
Other Materials Required:

- ① (1) SnapNrack L-Foot Assembly
- ② (1) 5/16in Lag Screw
- ③ (1) 5/16in Washer

*Up To 1"
Leveling

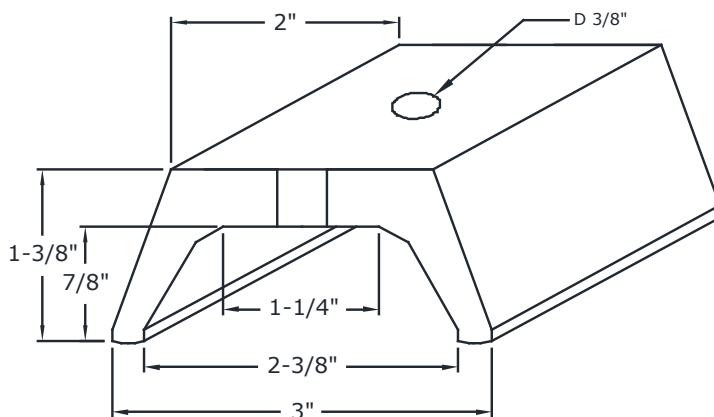


Dimensioned Assembly



Tek Screw For Steel Roofing Members,
Lag Screw For Wooden Rafters

Dimensioned Corrugated Block



Technical Corrugated Block Data:

Material	6000 Series Heat Treated Aluminum
Color	Mill Finish
Weight	0.3 LBS
Design Uplift Load	200 LBS Uplift
Design Ultimate Load	1000 LBS Uplift

Only use
Mill Finish L-foot
with
Split lock washer

1) Locate the rafter



2) Drill the pilot hole



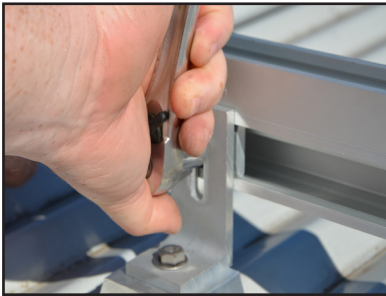
3) Apply roofing sealant



4) Attach corrugated block with L-Foot



5) Tighten hardware



Series 100 UL Corrugated Block

Step-by-Step Instructions

- 1) Locate the rafter underneath the decking of the roof by locating the screws. The rafter lies directly underneath the screws.
- 2) Drill a pilot hole through the roofing material into the rafter to ensure that the lag bolt will be located into a solid portion of the rafter. If the rafter is not found then seal the pilot hole immediately with roofing sealant.
- 3) Apply roofing sealant if needed directly onto the pilot hole and lag to ensure a water tight seal.
- 4) Attach the Corrugated Block with L-foot using a 5/16" lag bolt (TYP) or appropriate lag with a minimum embedment of 2 1/2" lag shank into the rafter. Tighten lag bolt to seat.
- 5) Tighten L-foot assembly silver hardware to 10 - 16 ft-lbs and tighten black hardware to 8-10 ft-lbs.

Notes

- SnapNrack engineered systems should only be used with SnapNrack components and hardware. Any alternate application may void the warranty and structural calculations could become invalid.

Warning

- If a pilot hole is drilled and a rafter is not found, immediately seal pilot hole with roofing sealant to avoid water damage.
- Do not over tighten hardware.
- Always wear fall protection and safety gear.

Design Tools

- SnapNrack has a suite of design tools to help configure your PV installation to be an accurate and fast install. Please visit us at: www.SnapNrack.com