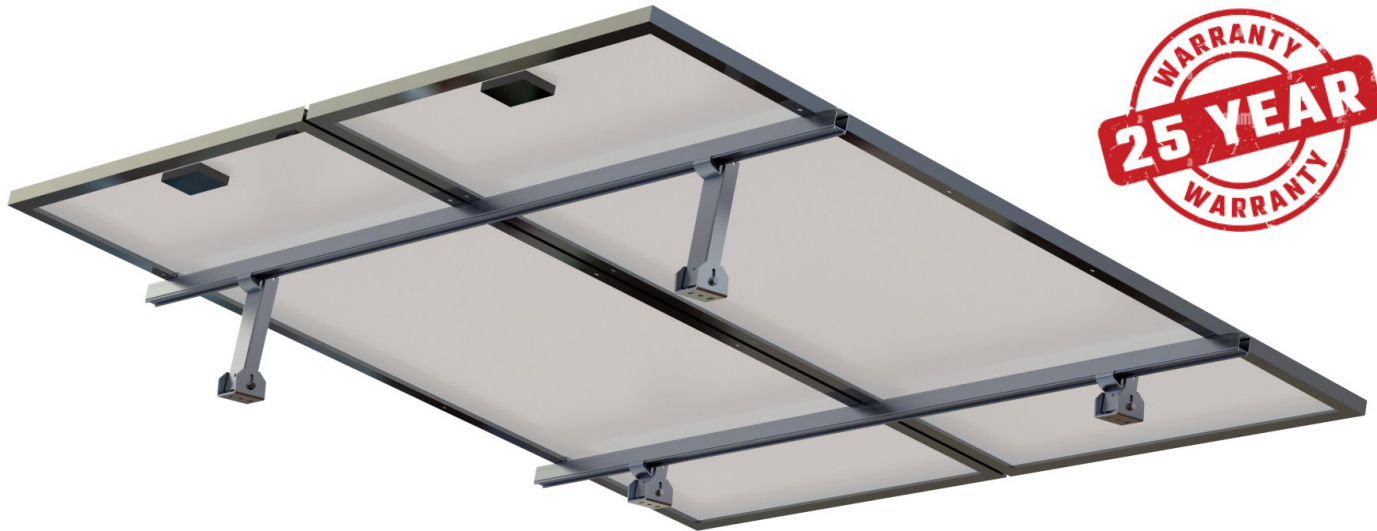


Flush Mount Tilt Kit UNI-TL10

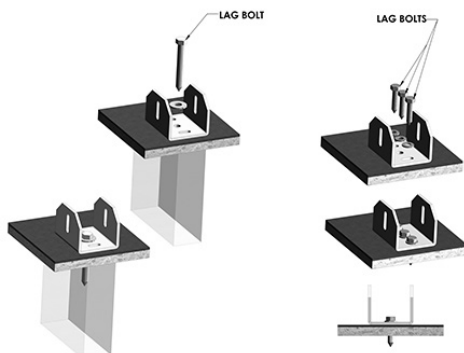
FM Rail Tilt Kits for Flat and Low Slope Roofs



- Add 7° to 11° degrees of tilt to a Flush Mount System
- Each kit contains one 3.5-IN leg and one 10.5-IN leg
- Rail mounts included for easy attachment to rails
- U-foot on each leg mounts roof with a single 5/16-IN lag bolt
- Legs are electrically bonded to rails
- Single-tool installation using a 1/2-IN socket
- Order appropriate lag bolts for roof thickness and pull out strength

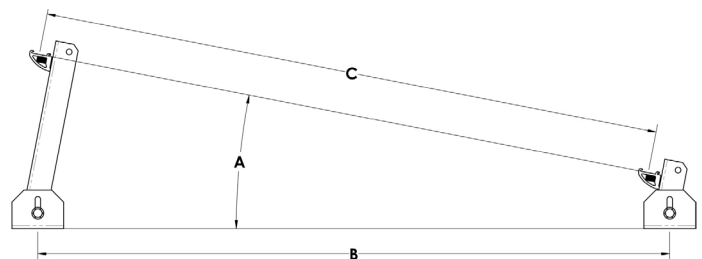
U-Foot Penetration Detail

Use one 5/16-IN lag bolt. There should be at least 2-1/2-IN of penetration in a structural member. For Deck mounting, use three 1/4-IN fasteners. Deck mounting is not recommended in high wind and snow regions. It is the responsibility of the installer to evaluate the decking.



Array Tilt Angle

Tilt Angle is controlled by rail spacing and foot spacing. Rails are typically located at or near the mounting holes in the module frame



| A | B | C |
|-------------|--------------|------------------------------------|
| PANEL ANGLE | FOOT SPACING | PANEL HOLE CENTER GENERAL LOCATION |
| 11° | 36.69 | 36.00 |
| 10° | 40.31 | 39.70 |
| 9° | 44.75 | 44.20 |
| 8° | 50.30 | 49.81 |
| 7° | 57.44 | 57.01 |