

# UPG Sealed Lead-Acid Battery

UPG No. D5882

STAY POWERED®

Absorbent Glass Mat (AGM) technology for superior performance. Valve regulated, spill proof construction allows safe operation in any position. Approved for transport by air. D.O.T., I.A.T.A., F.A.A. and C.A.B. certified. U.L. recognized under file number MH 20567.

## UB12750FR

Maintenance-Free

### Specification

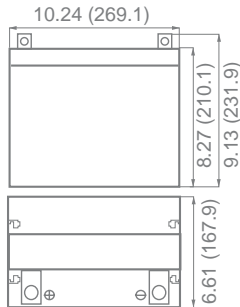
<b>Nominal Voltage</b>	12 volts	
<b>Nominal Capacity</b>	77° F (25° C)	
20-hr. (3.75A)	75.0 Ah	
10-hr. (6.98A)	69.8 Ah	
5-hr. (12.8A)	63.8 Ah	
1-hr. (45.0A)	45.0 Ah	
<b>Approximate Weight</b>	50.7 lbs (23 kgs)	
<b>Internal Resistance (approx.)</b>	8 mΩ	
<b>Shelf Life (% of normal capacity at 68° F (20° C))</b>		
3 Months	6 Months	12 Months
91%	83%	64%
<b>Temperature Dependency of Capacity (20 hour rate)</b>		
104° F (40°C)	77° F (25°C)	32° F (0°C)
102%	100%	85%
		65%
<b>AGM Operational Temperature</b>		
Charge	32°F to 104°F (0°C to 40°C)	
Discharge	5°F to 113°F (-15°C to 45°C)	
<b>AGM Storage Temperature</b>	5°F to 104°F (-15°C to 40°C)	
<b>Characteristics</b>	FR = Flame Retardant, ABS, UL 94V-0	



Due to continuous improvements to our products, product may vary slightly from depiction.

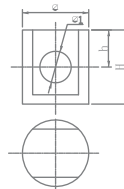
<b>Charge Method (Constant Voltage)</b>		
<b>Cycle Use (Repeating Use)</b>		
Initial Current	22.5 A or smaller	
Control Voltage	14.6 - 14.8 V	
<b>Float Use</b>		
Control Voltage	13.6 - 13.8 V	

### Physical Dimensions: in (mm)



**L:** 10.24in (260.1 mm)  
**W:** 6.61in (167.9 mm)  
**H:** 8.27in (210.1 mm)  
**TH:** 9.13in (231.9 mm)  
 Tolerances are +/- 0.04 in. (+/- 1mm) and +/- 0.08 in. (+/- 2mm) for height dimensions. All data subject to change without notice.

### Terminals



Z Series (Z Post Terminal)

Dimension Type	∅	∅1	H	h
Z1	17.0	8.0	21.5	9.0

### Constant Current Discharge Characteristics Unit:A (25°C, 77°F)

F.V/Time	5MIN	10MIN	15MIN	30MIN	1HR	2HR	3HR	4HR	5HR	8HR	10HR	20HR
9.60V	259.0	189.0	133.0	81.0	42.0	25.0	18.0	14.0	11.6	8.1	7.4	4.0
10.20V	228.0	172.0	119.0	76.3	39.5	23.4	17.5	13.7	11.3	8.0	7.2	3.9
10.50V	220.0	164.0	112.0	74.0	38.0	22.8	17.1	13.4	11.2	7.9	7.0	3.8
10.80V	211.0	155.0	105.0	72.0	37.0	22.3	16.7	13.2	10.9	7.7	7.0	3.8
11.10V	203.0	147.0	98.0	70.0	36.0	21.7	16.1	12.8	10.6	7.5	6.7	3.6

### Constant Power Discharge Characteristics Unit:W (25°C, 77°F)

F.V/Time	5MIN	10MIN	15MIN	30MIN	1HR	2HR	3HR	4HR	5HR	8HR	10HR	20HR
9.60V	2750.0	2007.0	1412.0	855.0	486.0	284.0	208.0	162.0	134.0	94.0	85.0	46.0
10.20V	2566.0	1911.0	1321.0	847.0	457.0	271.0	203.0	158.0	131.0	92.0	83.0	44.8
10.50V	2493.0	1857.0	1270.0	841.0	443.0	264.0	198.0	156.0	130.0	92.0	82.0	44.3
10.80V	2461.0	1809.0	1222.0	839.0	430.0	259.0	194.0	152.0	127.0	90.0	81.0	44.0
11.10V	2416.0	1749.0	1166.0	833.0	425.0	258.0	192.0	152.0	127.0	89.0	79.0	42.7

www.upg i.com



ISO 9001

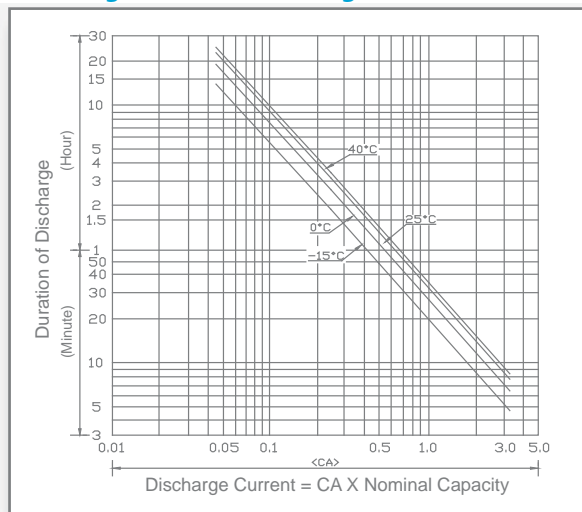
All specifications subject to change without notice.

488 S. Royal Lane | Coppell, Texas 75019 | P 469.892.1122 | T 866.892.1122 | F 469.892.1123 | sales@upgi.com

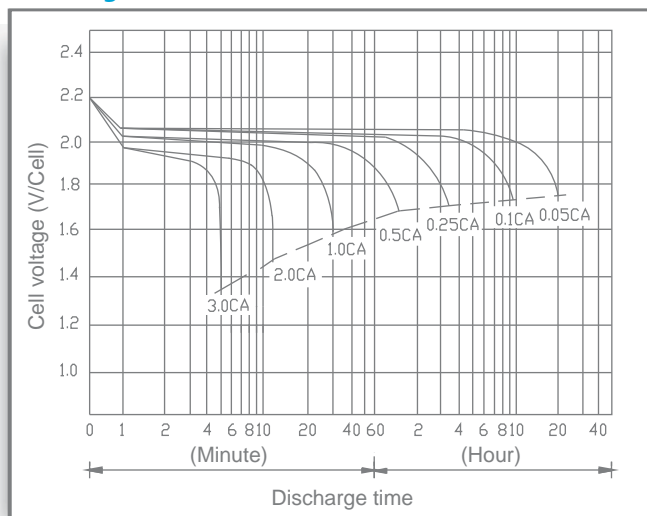
Copyright ©2020 Universal Power Group Inc. All rights reserved.

S2018-1

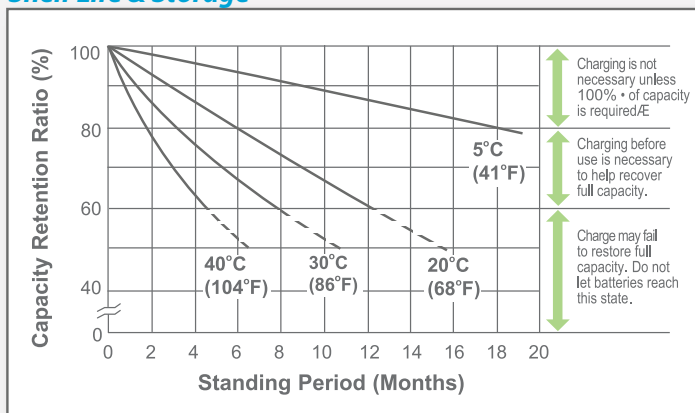
### Discharge Time vs. Discharge Current



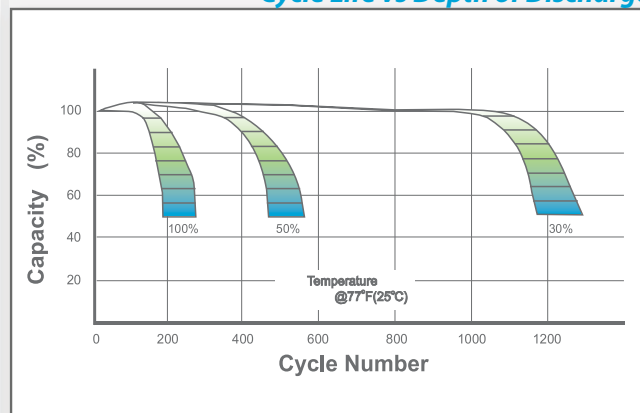
### Discharge Characteristics



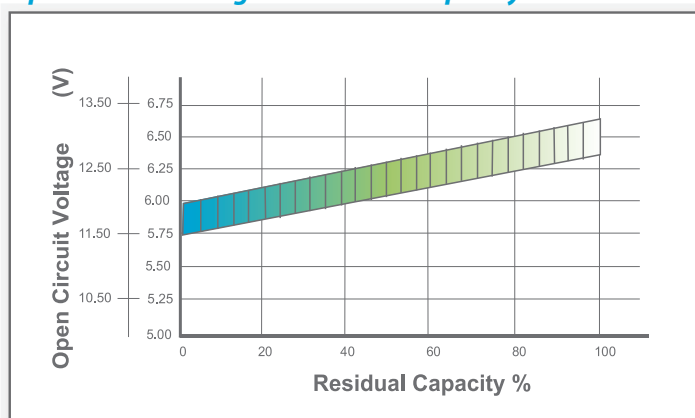
### Shelf Life & Storage



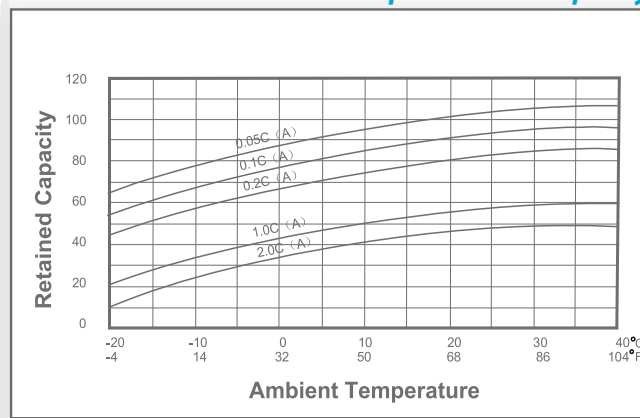
### Cycle Life vs Depth of Discharge



### Open Circuit Voltage vs Residual Capacity



### Effect of Temperature on Capacity



### Charge Current & Final Discharge Voltage

Application	Charge Voltage(V/Cell)			Max.Charge Current
	Temperature	Set Point	Allowable Range	
Cycle Use	25°C(77°F)	2.45	2.43~2.47	0.30C
Standby	25°C(77°F)	2.28	2.27~2.30	

Final Discharge Voltage V/Cell	1.75	1.70	1.60	1.30
Discharge Current(A)	0.2C>(A)	0.2C<(A)<0.5C	0.5C<(A)<1.0C	(A)>1.0C



Let UPG Power Your Life.

www.upgi.com