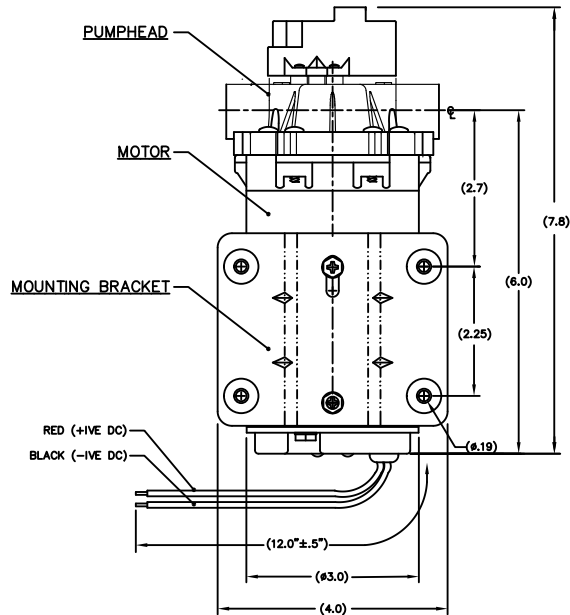
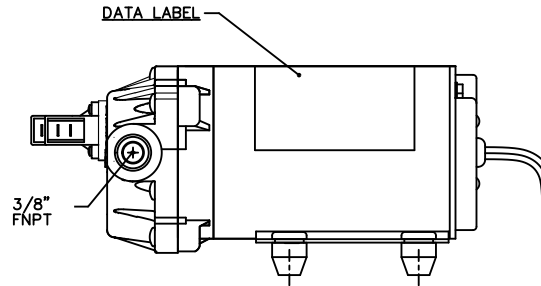
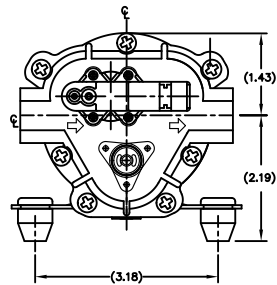


THE INFORMATION CONTAINED HEREON IS PROPRIETARY AND CONFIDENTIAL TO AQUATEC WATER SYSTEMS, INC. AND SHALL NOT BE USED OR DISCLOSED IN WHOLE OR IN PART WITHOUT FIRST OBTAINING THE WRITTEN PERMISSION OF AQUATEC WATER SYSTEMS, INC.

REVISIONS				
REV	DESCRIPTION	DATE	DRAWN	APPROVED



PRESSURE PSI	FLOW GPM	AMPS
0	1.3	2.00
10	1.25	2.10
20	1.20	2.50
40	1.10	3.50

TECHNICAL SPECIFICATIONS

GENERAL DESCRIPTION:

THREE CHAMBER, POSITIVE DISPLACEMENT DIAPHRAGM PUMP.
SELF PRIMING, CONTINUOUS DUTY (WET OR DRY),
PERMANENT MAGNET MOTOR.

MECHANICAL AND HYDRAULIC SPECIFICATIONS:

1. SWITCH SETTING: 60 PSI (4 BAR)
2. HYDRAULIC SPECIFICATIONS: MIN 1.20 GPM AT 20 PSI
4. PRIMING: 6 FEET

ELECTRICAL SPECIFICATIONS:

1. VOLTAGE: 12 VDC
2. AMPERAGE: 5 AMPS AT 60 PSI

MATERIAL SPECIFICATIONS:

PUMPHEAD - NYLON
O-RINGS - EPDM
VALVES - EPDM
DIAPHRAGM - SANTOPRENE
VALVE PLATE - POLYPROPYLENE

OTHER SPECIFICATIONS:

1. DOUBLE BALL BEARING MOTOR
2. PRIVATE LABEL TO SPECIFY MODEL #, SERIAL #, AND MFG DATE.
3. PACKAGING: SINGLE PACK 4 TO A CASE
4. WEIGHT: APPROXIMATELY 6 LBS FOR EACH SINGLE PACK.
5. PORTS: 3/8" FNPT
6. SEALED MOTOR

UNLESS OTHERWISE SPECIFIED
DIMENSIONS ARE IN INCHES AT 65°F
TOLERANCES ARE:
FRACTIONS: DECIMALS: ANGLES:
±1/64 .X = .030 ±1/2"
.XXX = .005
© CONCENTRICITY .005 T.I.R.
1 PERPENDICULARITY .0005/IN.
ANGULAR DIMS FOR CHAMPS & CSKMS ±2°
FILLET RADI .010 TO .030
BREAK CORNERS .005 TO .010 R, OR CHAMF.
FINISH AA 125 MICRO IN. PER ANSI B46.1

MATERIAL		N/A	
FINISH		N/A	
APPROVALS	DATE		
DRAWN	W.S.	6/22/22	
DESIGNED			
CHECKED			
SHEET	1 OF 1		

AQUATEC WATER SYSTEMS INC.
17422 Pullman St., Irvine, Ca. 92614

**SPECIFICATION DRAWING,
DIAPHRAGM PUMP,
5888-1EM1-M984**

CAD# 5888-1EM1-M984	
PRODUCT CODE	
NEXT ASSY	USED ON
APPLICATION	

GEOMETRIC SYMBOLS
PER ANSI-Y14.5
DO NOT SCALE DRAWING

SIZE	SCALE	PART/DWG NO.	REV
B	NONE	5888-1EM1-M984	