

# GROUNDING LUG

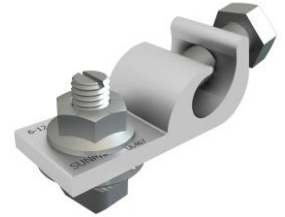
## INSTALLATION INSTRUCTIONS



### Please read carefully before installing.

The SunModo Grounding Lugs are tested to UL 467 and are recognized to UL 2703 standards for safety grounding and bonding equipment.

The Grounding Lugs can be used to bond anodized aluminum to a copper wire electrode. All installations shall be in accordance with NEC requirements in the USA. The Grounding Lugs are for use with PV module systems with a maximum system voltage of 1500V and a maximum series fuse rating of 30A.



K10469-004

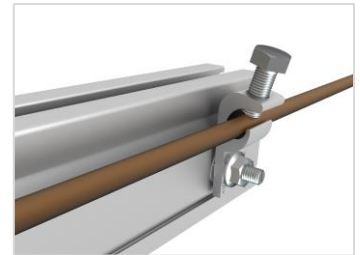
### SMR Rail Grounding Lug Installation:

1. Align the Grounding Lug in the desired orientation on the Rail top slot.
2. Turn the T-bolt 90 degrees in the slot to engage the rail and then tighten the Hex Nut to 10.2 Nm (7.5 ft-lbs.) using a 13mm (1/2") hex socket.
3. Install the solid or stranded copper wire and tighten the Screw to 5.6 Nm (50 in-lbs.) using a 13mm (1/2") hex socket.



### Alternate Installation:

1. Drill a hole on the side of the Rail large enough to accommodate the M8 (5/16") T-Bolt.
2. Install the Grounding Lug to the side of Rail.
3. Complete the Grounding Lug assembly by using the appropriate steps shown above.



### Notes:

1. The NEC section pertaining to PV installations section 690.43 states that "Exposed non-current carrying metal parts of module frames, equipment, and conductor enclosures shall be grounded in accordance with 250.134 or 250.136(A) regardless of voltage."
2. The Grounding Lug is intended for a single use after final torque values are reached and is designed to terminate or pass thru: #6 thru #12 AGW cable, either solid or stranded, including #6 thru #12 THNN or THWN jacketed cable.
3. See PV module's installation instructions when mounting the Grounding Lug to the PV module.
4. It is suggested that use of an anti-seize lubricant be used on all stainless screw parts.

RECOGNIZED  
COMPONENT

