



# ***EIGHT PIECE 84-INCH FLUSH MOUNT RAIL KIT***

## **Save Time and Money**

Attractive black rail-based PV module mounting system provides easy installation, simple wire management, great strength and economical single box UPS ground shipping.



- Kit contains all parts required to mount 8 typical 60-cell or 72-cell modules\*
- Use with any roof attachment that can accommodate a 5/16-inch bolt
- Kit can be shipped by UPS
- Cables can be run inside rails to keep them off the roof

\* In portrait orientation. Module clamps fit any module with frame thickness of 30mm to 40mm and a maximum module width of 41.5 inches.



**Best Wire Management** - PV cables and wiring for module-level electronics fits inside rails to avoid time consuming wire management.



**Use Any Roof Attachments** - Included L-foot mount to Tamarack composition shingle flashings, S-5! metal roof clamps or any roof attachment that can be used with a 5/16 inch bolt.



**One Wrench Size** - Install with ease and minimal tools. A 1/2-inch socket fits all fasteners.



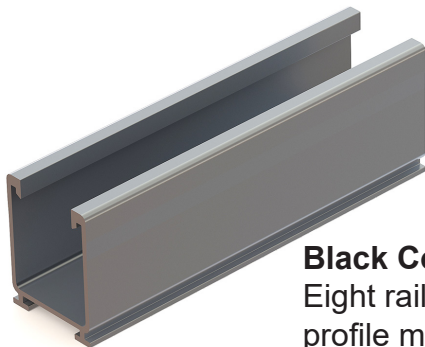
**UL 2703 Listed** - All components meet the UL standards and have a Class A Fire Rating for Type 1 and 2 modules.



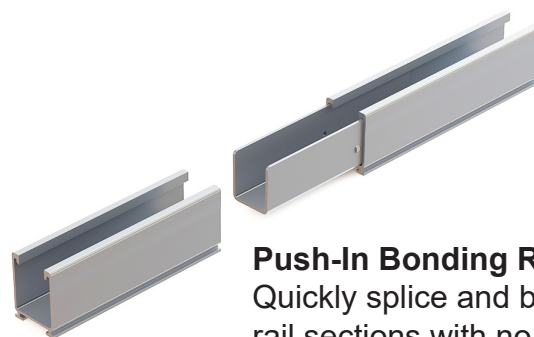
**PE Certified** - Pre-stamped engineering letters available for most states.

# Tamarack Flush Mount 84-inch Rail Kit

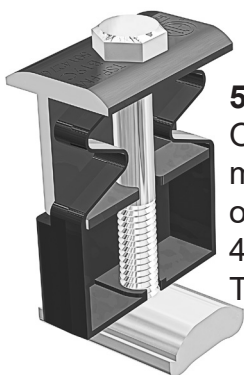
## Install Eight Typical PV modules\*



**Black Coated Rails**  
Eight rails for attractive low-profile mounting of up to eight modules with four-foot roof attachment spacing. Certified for up to 180 MPH wind speed and 120 PSF snow load.



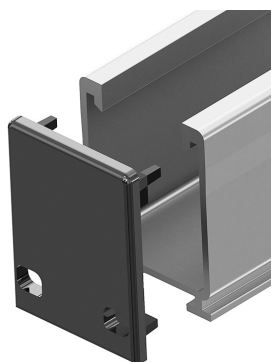
**Push-In Bonding Rail Splice**  
Quickly splice and bond rail sections with no tools or fasteners. Top Clamps and Rail Mounts can be co-located with splice. Eight splices included.



**5050 Clamp**  
One clamp can be used as a mid-clamp or an end-clamp on modules with 30 mm to 40 mm frame height. Twenty clamps are included.



**Rail Mount and L-Foot**  
Quickly and securely mount the rail from either side, to any L-Foot, Tile Hook or specialty flashing with a hole or slot for a 5/16-inch bolt. 16 mounts are included.



**Push-On End Cap**  
Eight caps, for two rows give the rail system a finished look while allowing drainage.

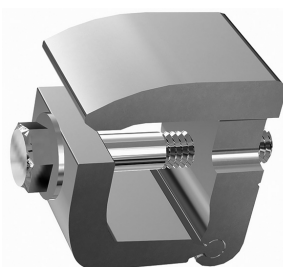


**Wire Management Clip**  
Kit includes 24 clips that can be pushed into top of rail to keep cables in place.



**Ground lug**  
Use one per module row to ground rail with bare 6 to 10 AWG copper wire. Four clamps are included.

**Channel End Clamp**  
This end clamp replaces the 50/50 clamp at the end of the row of modules for better aesthetics. It is your choice which part to use. Eight clamps are included.



**MLPE Adapter**  
Use this adapter for mounting microinverters and optimizers on the rails under the modules. Use one adapter for each device. Eight adapters are included.

